



Braxton Copley, Director of Utilities
3245 NW Waterworks Dr.
Topeka, Kansas 66606

Tel: 785-368-3111
www.topeka.org

For Immediate Release

Contact for further information:

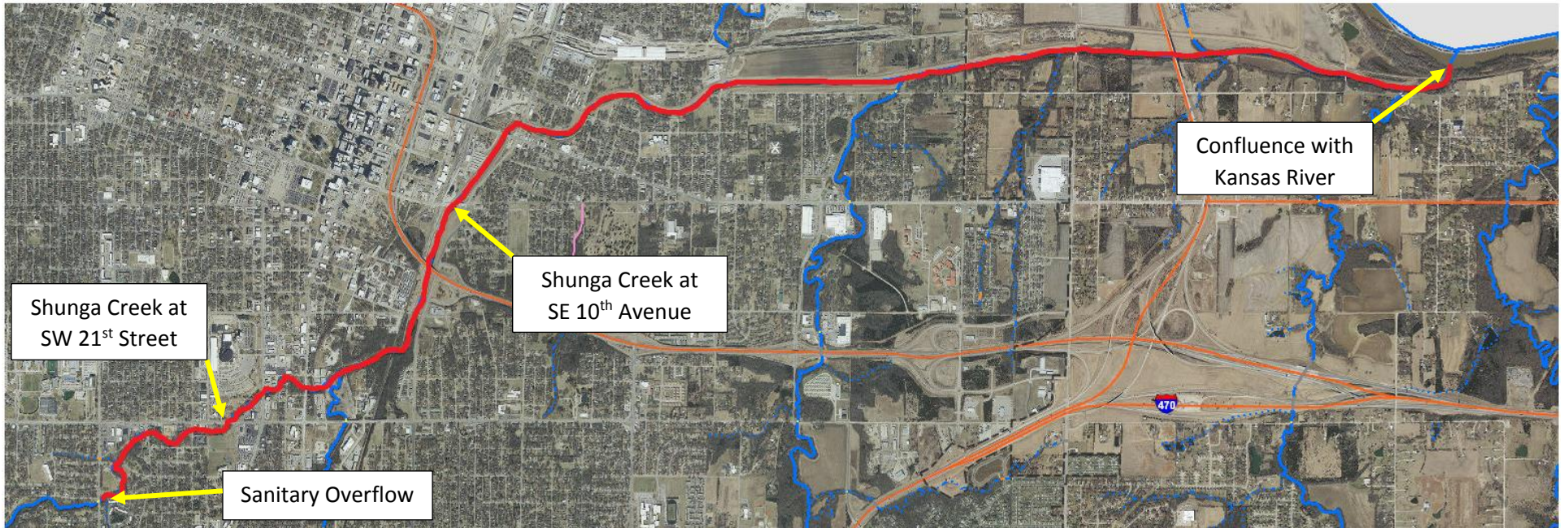
Ryan Woolaway, Utilities Community Education Manager 785-409-8636 or rwoolaway@topeka.org

Thursday May 27, 2021

Lifting Stream Advisory

TOPEKA, KS – The City of Topeka Utilities Department is lifting the stream advisory for the Shunganunga Creek starting at SW Shunga Drive and Washburn Avenue that went into effect on Friday, May 21. Test results from recent stream samples showed acceptable levels of bacteria; indicating the creek has returned to normal background levels.

The Kansas Department of Health and Environment has been notified.



Shunga Creek at
SW 21st Street

Shunga Creek at
SE 10th Avenue

Sanitary Overflow

Confluence with
Kansas River