



CITY OF TOPEKA
UTILITIES

Braxton Copley, Director of Utilities
3245 NW Waterworks Dr.
Topeka, Kansas 66606

Tel: 785-368-3111
www.topeka.org

For Immediate Release

Contact for further information:

Ryan Woolaway, Utilities Community Education Manager 785-409-8636 or rwoolaway@topeka.org

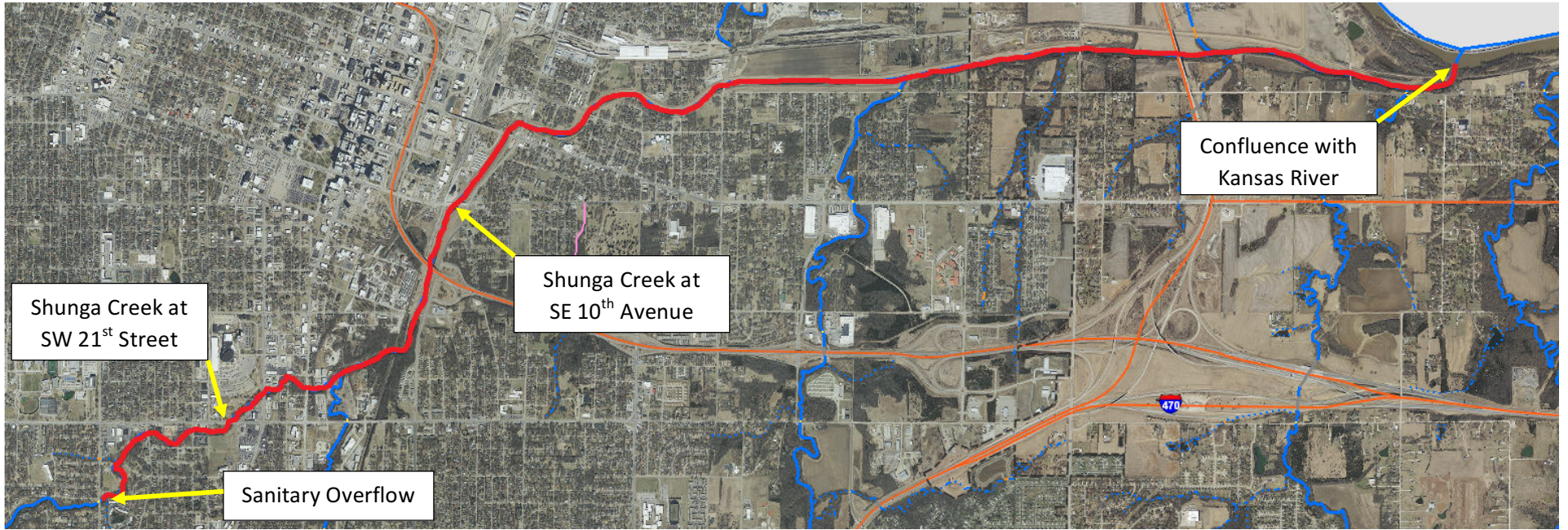
Friday May 21, 2021

Stream Advisory

TOPEKA, KS – The City of Topeka Utilities Department is advising Topeka area residents to avoid contact with the Shunganunga Creek starting at SW Shunga Drive and Washburn Avenue until further notice due to a localized sanitary sewer overflow. Infrastructure has struggled with excess water from recent rain events and saturated soils (commonly referred to as inflow and infiltration) contributing to flows in the sanitary sewer system. This excess stormwater combined with sanitary flows caused areas of the system to overflow into nearby waterways.

As a precaution residents are advised to avoid contact with the impacted waterway and to keep pets out of the stream. Staff will continue to monitor the water along Shunganunga Creek and provide notification when the advisory can be lifted. This does not affect tap water.

The Kansas Department of Health and Environment has been notified.



Shunga Creek at
SW 21st Street

Shunga Creek at
SE 10th Avenue

Confluence with
Kansas River

Sanitary Overflow